

Deeparam M. Prajapat

+91 9619519358

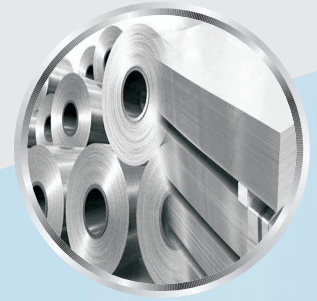
+91 9867104478



MUKESH STEEL

Ashok D. Prajapat

+91 7304867104



- Stainless Steel
- Carbon Steel
- Alloy Steel
- Copper
- Brass
- Aluminium
- PVC Fittings
- Anchor Fasteners

PERFORMANCE • QUALITY • TRUST



MUKESH STEEL

Deeparam M. Prajapat +91 9619519358 / +91 9867104478



ABOUT US

MUKESH STEEL is a Leading Manufacturer, Extensive Stockholder of Piping Products for the Oil, Gas, Petrochemical and Nuclear Industries. We are the Manufacturer of Butt-weld Fittings, Forged Fittings, Compression Fittings, Outlets, Flanges & Long Radius Bends in Materials like Stainless Steel, Carbon Steel, Alloy Steel, Duplex & Super Duplex Steel, Nickel Alloys etc.

WHY US

We are a renowned name in this domain engaged in providing various types of Stainless steel, Carbon Steel & Alloy Steel Products; we have gained immense client's appreciation, Owing to our excellent product quality and transparent dealings.

- Cost-effective rates
- Customized solution
- Customized packaging
- Customer focused approach
- Easy payment modes
- Good Financial Position & TQM
- Superior quality products
- Timely delivery schedule
- Timely delivery of products
- Experience and specialty in work

WHO WE ARE



Manufacturer

We are Professional Exporter & Manufacturer of Buttweld Fittings, Socket Weld fittings, Flanges with respective grades, Stainless Steel Pipes, Nickel Alloys Pipes, Titanium Pipes, Inconel Pipes, Hastelloy Pipes, Duplex & Super Duplex Pipes, Alloy 20 and Rods.

Stockist & Exporters

We are one of the largest stockholder & exporters of Carbon & Alloys Steel Pipes, Fasteners, All Types of Valves, Plates, Sheets, with respective grades. We also exports copper & brass products in shape of Pipes, Tubes, Bars and Plates.

For over years, customers have depended on us for the very best in specialty metals, complete processing services, timely delivery and expert service.

OUR VISION



To enlarge our product portfolio and production capacities leveraging our domain knowledge, expertise and resources by fostering global partnerships and alliances to become leading global player with dominant market share.

To be the partner of choice for our customers by providing High Quality Steel Pipes, Steel Tubes & industrial Steel pipes for Important sectors Like Oil & Gas with enhancing services tailored to meet their requirements.

To develop bench mark innovations and technologies to suit the changing requirements of the customers & the industry by continuous investments in updating our manufacturing & human resources.

To provide total customer satisfaction through quality products and services at competitive costs.



MUKESH STEEL

Deeparam M. Prajapat +91 9619519358 / +91 9867104478



Pipes & Tubes

Stainless Steel : ASTM A312 TP 202/304/ 304L/ 304H/ 316/ 316L/ 317/ 317L/ 321/310/ 347/ 904L etc.
Carbon Steel : ASTM A53 GR. B/ A106 GR. B/ API 5L GRADE B/ API 5L GR.X42/46/52/56/60/65/70/
 Low Temperature, Carbon Steel: A333 Gr.3/Gr.6 etc.
Alloy Steel : ASTM A335 GR. P1/ P5/ P9/ P11/ P22/ P91 etc.
Nickel Alloys : Monel, Nickel, Inconel, Hastalloy, Titanium, Tantalum, Bismuth, Aluminium, High Speed Steel, 904L, Alloy 20
Duplex & Super Duplex Steel : UNS S31803, UNS S32750, UNS S32760,
Non Ferrous Metal : Copper, Brass, Bronze, Zinc, Lead etc. Types : Round , Square, Rectangular.
Size : 1/2" to 24" NB. (Seamless & Welded)
Wall Thickness : Sch. 5S to Sch. XXS



Buttweld Fittings

Stainless Steel : ASTM A403 WP 304/ 304L/ 304H/316/ 316L/ 317/ 317L/ 321/ 310/ 347/904L etc.
Carbon Steel : ASTM A234 WPB/A420 WPL3/A420 WPL6/ MSS-SP-75 WPHY 42/46/52 / 56/60/65/70
Alloy Steel : ASTM A234 WP1/WP5/WP9/ WP11/WP22/WP91 etc.
Duplex & Super Duplex Steel : UNS S31803, UNS S32750, UNS S32760,
Others : Monel, Nickel, Inconel, Hastalloy, Copper, Brass, Bronze, Titanium, Tantalum, Bismuth, Aluminium, High Speed Steel, Zinc, Lead, 904L, Alloy 20 etc.
Types : Elbow, Tee, Reducer, Return Bends, Stub-Ends, Cap, Collar, Cross, Insert etc.
Size : 1/4" NB TO 32" NB. (Seamless & Welded)
Wall Thickness : Sch. 5S To Sch. XXS.



Forged Socketweld & Screwed Fittings

Stainless Steel : ASTM A182 F304/ 304L/ 304H/316/ 316L/ 317/ 317L/ 321/310/ 347/ 904L etc.
Carbon Steel : ASTM A105 /A694 F42/46/ 52/56/ 60/ 65/70 / A350 LF3/ A350 LF2.
Alloy Steel : ASTM A182 F1/ F5/ F9/ F11/ F22/ F91 etc.
Others : Monel, Nickel, Inconel, Hastalloy, Copper, Brass, Bronze, Titanium, Tantalum, Bismuth, Aluminium, High Speed Steel, Zinc, Lead, etc.
Types : Elbow, Tee, Union, Cross, Coupling, Cap, Bushing , Plug, Swage Nipple, Welding Boss, Hexagon Nipple, Barrel Nipple, Welding Nipple, Parraler Nipple, Street Elbow, Hexagon Nut, Hose Nipple, Bend, Adapter, Insert, Weldolet, Elbowlet, Sockolet, Thredolet, Nipolet, Letrolet, etc.
Size : 1/4" NB TO 4" NB. (Socketweld & Threaded)
Class : 3000#, 6000#, 9000#.



Flanges

Stainless Steel : ASTM A182 F304/ 304L/ 304H/316/ 316L/ 317/ 317L/ 321/ 310/ 347/ 904L etc.
Carbon Steel : ASTM A105/ A694F42/46/52/56/60/65/70/A350 LF3/A350 LF2, etc.
Alloy Steel : ASTM A182 F1/ F5/ F9/ F11/ F22/ F91 etc.
Duplex & Super Duplex Steel : U NS S31803, UNS S32750, U NS S32760, 904L, Alloy 20
Others: Monel, Nickel, Inconel, Hastalloy, Copper, Brass, Bronze, Titanium, Tantalum, Bismuth, Aluminium, High Speed Steel, Zinc, Lead, etc.
Types : Weldneck, Slipon, Blind, Socket Weld, Lap Joint, Spectacles, Ring Joint, Oriface, Long Weldneck, Deck Flange, RTJ, Flange
Size : 1/2" NB TO 24" NB.
Class 150#, 300#, 400#, 600#, 900#, 1500# & 2500#.



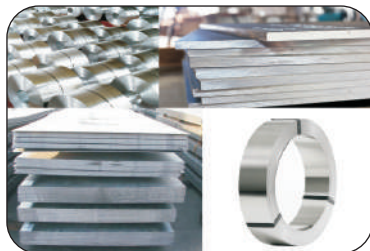
Ferrule Fittings

Stainless Steel : ASTM A182 F304/ 304L/ 304H/ 316/ 316L/ 317/ 317L/ 321/310/347/ 904L etc.
Carbon Steel : ASTM A105 / A694 F42/46/ 52/56/ 60/65/70 /A350 LF3/ A350 LF2.
Alloy Steel : ASTM A182 F1/ F5/ F9/ F11/ F22/ F91 etc.
Duplex & Super Duplex Steel : UNS S31803, UNS S32750, UNS S32760, 904L, Alloy 20
Other : Stainless Steel, Nickel Alloys, Carbon Steel, Alloy Steel, Monel, Nickel, Inconel, Hastalloy, Copper, Brass, Bronze, Titanium, Tantalum, Bimuth, Aluminium, High Speed Steel, Zinc, Lead, Etc.
Types : Nipples, Adaptors, Crosses, Union Ball Joints, Reducing Bushing, Reducers, Pipe Caps, Couplings, Pipe Plug, Hollow Hex Plug, Elbow, Reducing Union, 90 Deg. Union Elbow, Reducing 90 Deg. Union Elbow Etc. Extender Leg 90 Deg. Union Elbow, 45 Deg. Union Elbow, Union Tee, Female Connector, Male Connector, Manifold Tee, Locator Union, Extended Run Leg Union Tee, Reducing Tee, Tribow, ATW Weld Ring, Tube Socket weld To Pipe Butt Weld, Tube Butt Weld To Tube Socket Weld, Port Connector, Etc.



MUKESH STEEL

Deeparan M. Prajapat +91 9619519358 / +91 9867104478



Sheet, Plate & Coil

Stainless Steel Coils, Sheets & Plates as per ASTM A 240 Gr. TP 202, 304, 304L, 304LN, 309, 309S, 309H, 310S, 310H, 316, 316L, 316H, 316LN, 316Ti, 317, 317L, 321, 321H, 347, 347H, 348, 348H, 409, 410, 420, 430 etc.

Alloy Steel Plates as per ASTM A 387 Gr. 2, 5, 9, 11, 12 & 22 in class 1 & 2, ASTM A 204, Gr. A & B, DIN 17175 Gr. 15Mo3 & 16Mo3 with IBR Test Certificate.

Carbon Steel / Boiler Quality Plates as per IS 2062 Gr. A, B & C, IS 2002 Gr. 1 & 2, ASTM A516 Gr. 60 & 70 ASTM A515 Gr. 70.

High Nickel Alloy : Monel, Nickel, Inconel, Hastalloy, Copper, Brass, Bronze, Titanium, Tantalum, Bismuth, Aluminium, High Speed Steel, Zinc, Lead, etc.

Duplex & Super Duplex Steel : UNS S31803, UNS S32750, UNS 532760, 904L, Alloy 20
Types : Sheet, Plates, Strips, etc.



Fasteners & Nut Bolts

Stainless Steel : AISI 302, 304, 304L, 316, 316L, 310, 317, 321, 347, 410, 420, 904L etc.

Alloy Steel : 4.6, 5.6, 6.6, 8.8, 10.9 & 12.9 'R', 'S', 'T' Conditions.

Carbon Steel : Bare Condition, Galvanized, Phosphetised, Cadmium Plated, Hot Deep Galvanized, Bloodied, Nickel Chrome Plated etc.

Non-Ferrous Metal : Copper, Brass, Aluminium, Titanium, Nichrome, Al-Bronze, Phosphorous Bronze etc.

Type : Bolts, Nuts, Washers, Anchor, Fasteners, Stud Bolts, Eye Bolt, Stud, Threaded Rod, Cotter Pin, Socket, Screw, Fine Fasteners & Spares, Foundation Fasteners etc.



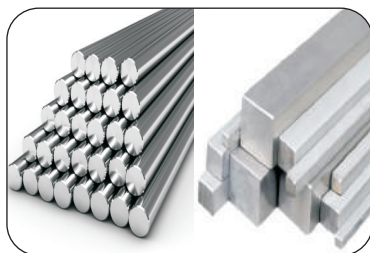
Valve

Stainless Steel : AISI 304, 304L, 316, 316L, 310, 317, 317L, 321, 347, 904L etc.

Carbon Steel : A105, A216, Gr. WCB, Cadmium Plated, Nickel, chrome Plated etc.

Non-Ferrous Metal : Copper, Brass, Titanium, Phosphorous Bronze etc.

Type : Ball Valve, Gate Valve, Check Valve, Needle, Valve, Mini Valve, Gauge Rott Valve, Globe Valve, Manifolds (2 Way, 3 Way, 5 Way)



Round, Square & Hex Bar

Stainless Steel : As per ASTM A276 & A479 Grade 202 / 304 / 304L / 316 / 316L / 316Ti / 317 / 317L / 321 / 310 / 347 / 410 / 416 / 420 / 430 / 440C / 904 / 303 / 17-4PH, 15-5 PH etc.

Nickel Alloys : Monel, Inconel, Hastelloy, Nickel, Titanium, Alloy 20

Duplex & Super Duplex : UNS 32205, 31803, 32750, 32760,

Types : Round, Square, Rectangular.

Size : 3mm - 75 mm dia ready stock with Mill Test Certificate

Process : Cold Drawn, Annealed, Export Bright & Black

Tolerance : H9, H11



Dairy Fittings

Stainless Steel : AISI 304, 304L, 316, 316L, 310, 317, 317L, 321, 347, 904L etc.

Carbon Steel : A105, A216, Gr. WCB, Cadmium Plated, Nickel, chrome Plated etc.

Non-Ferrous Metal : Copper, Brass, Titanium, Phosphorous Bronze etc.

Type : Nipple, Dairy Fittings, Union, S.M.S., I.D.F., Dairy Valve, Butterfly Valve, Ball Valve, Needle Valve, N.R.V. Valve, Floot Valve, Safety Valve, Cock Valve, Syphon Tube



MUKESH STEEL

Deeparam M. Prajapat +91 9619519358 / +91 9867104478



Manufacturing

Butt Weld Pipe Fittings & Flanges



This is to introduce ourselves as the most reliable outstanding partners for manufacturing of buttwelding pipe fittings, socket weld, pipe fittings, flanges & tubular components in all kinds of steel. Our panel of 25 years past experienced manufacturers ensures excellent quality fittings meeting exacting standards of National & International quality.

These Pipe Fitting are manufactured from ferrous metals & non ferrous metals such as Carbon Steel, Alloy Steel, Low Temperature Carbon Steel & Stainless Steel, Hastelloy, Titanium, Inconel, Monel, etc. Both Seamless and E.R.W. Pipe Fittings are produced by our special manufacturing process involving either hot or cold forming. We are fully capable of manufacturing Pipe fittings made to customer's specifications in terms of type, dimensions, material & quantity under any third party inspection.

These Pipe Fittings are perfectly round, rugged, leak proof, corrosion resistant (Where ever required), meeting all the requirements to ASTM/BS/DIN/ISI codes. These quality fittings extend the life of piping systems, facilitate direct pipe welding, permit compact installing a piping network.



FACILITIES

- Hydraulic Press
- Universal Testing Machine
- Hardness Tester
- PMI Testing Machine
- Hacksaw Cutting Machines
- Lathe Machines
- Plate Rolling Machines
- Grinding Machines
- Motor Generator Welding Set (Advani)
- DC Rectifier Welding Sets (Advani)
- Computer & Software



Dairy & Pharma Fittings Products



NRV LIFT TYPE



NRV HORIZONTAL



NRV VERTICAL



SIGHT GLASS FLANGED



SYPHONE COCK



FOOT VALVE



MICRO VALVE



TC Butterfly Valve



NON-RETURN VALVE WITH NRV



IC BALL VALVE IMPORTED



CAM LOCK & WHITE STAINER



CAM LOCK COUPLING



FLEXIBLE HOSE WITH FLANGE



BSP FLEXIBLE HOSE



DOUBLE CHECK VALVE QRC



SINGLE CHECK VALVE QRC



STRAIGHT THROUGH QRC



CONDENSAT POT



PRESSURE GAUGE SNUBBER



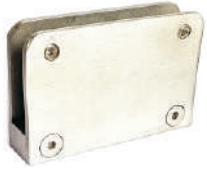
PRESSURE GAUGE



MUKESH STEEL

Deeparan M. Prajapat +91 9619519358 / +91 9867104478

GLASS FITTINGS



MSP-01
Heavy Bracket 3x2



MSP-02



MSP-03



MSP-04



MSP-05
4"



MSP-06
Glass Patti 6" / 8"



MSP-07
6" / 8"



MSP-08
Kaju Katli



MSP-09



MSP-10



MSP-11
Black Rubber



MSP-12
White Rubber

STAINLESS STEEL ROPE WIRE FITTING



MSP-13
Rope Wire



MSP-14
Ten Buckle



MSP-15
Hammer Kadi



MSP-16
U Clamp



MSP-17
D-Shackle



MSP-18
Snap Hook



MSP-19
Bow Shackle



MSP-20
Chain Quick Link



MSP-21
Thimble



MSP-22
Safety Snap Hook



MSP-23
Aluminium Clip Lock

ALL TYPES OF SANITARY & DOOR FITTING





MUKESH STEEL



Deeparam M. Prajapat +91 9619519358 / +91 9867104478

EXCLUSIVE BALL SET & NET



MSP-24 Round Ball



MSP-25 Temple Ball



MSP-26 Dott Ball



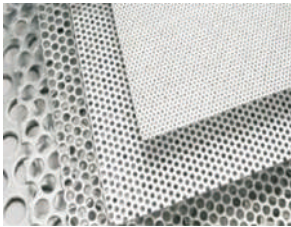
MSP-27 Sq. Two Side Hole



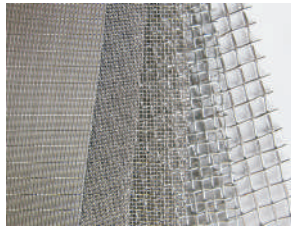
MSP-28 Two Side Hole



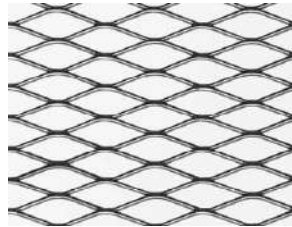
MSP-29 One Side Hole



MSP-30 Perforated Sheet



MSP-31 Wire Mesh Sheet



MSP-32 Expanded Sheet



MSP-33 Hinges



MSP-34 Two Pin Hinges

RAILING ACCESSORIES



MSP-35 Patti Base



MSP-36 Base



MSP-37 Square Base



MSP-38 Rectangle Base



MSP-39 Conceal



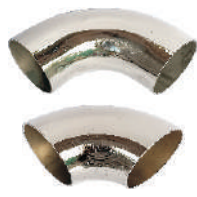
MSP-40 Square Conceal



MSP-41 Sq. / Rd. Conceal Cover



MSP-42 Rect. / Sq. Conceal Cover



MSP-43 Long / Short Bend



MSP-44 SS Link Chain 2mm to 12mm



MSP-45 Rd. Ball Base



MSP-46 Square Ball Base



MSP-47 Round Bush



MSP-48 Adjust Round Bush



MSP-49 Square Bush



MSP-50 Adjust Square Bush



MSP-51 Rectangle Bush





MUKESH STEEL

Deeparan M. Prajapat +91 9619519358 / +91 9867104478



FASTENERS FITTINGS



MSP-53
Dom Nut



MSP-54
Alenkey CSK



MSP-55
Hex Bolt



MSP-56
Hex Nut



MSP-57
Tam Anchor



MSP-58
Fastener



MSP-59
Fastener Hook



MSP-60
I-Nut



MSP-61
I-Bolt



MSP-62
Rivet



MSP-63
Threade Rod

STAINLESS STEEL PIPE FITTING



MSP-64
B/W Elbow



MSP-65
B/W Tee



MSP-66
B/W Reducer



MSP-67
B/W Coupling



MSP-68
B/W Long Stubend



MSP-69
B/W Plug



MSP-70
B/W Hex Nipple



MSP-71
TC Ferrule & Ring



MSP-72
Blank Ferrule



MSP-73
Barrel Nipple



MSP-74
IC Elbow



MSP-75
IC Tee



MSP-76
IC Union



MSP-77
SMS Union



MSP-78
TC Clamp



MSP-79



MSP-80
Weldneck Flange



MSP-81
Hose Nipple



MSP-82
Screwed Ball Valve



MSP-83
3 Way Ball Valve



MSP-84
TC Ball Valve



MSP-85
Pipe Holder Clamp



MSP-86
Spray Ball





MUKESH STEEL

Deeparam M. Prajapat +91 9619519358 / +91 9867104478



POLISHING / WELDING & PACKING PRODUCTS



Flexible Wheel



Double Net Wheel



Grinding Wheel



Flap Disk



Non Woven Disk



Cutting Wheel



White Wheel



Packing Roll



Polish Pad



Cotton Wheel



Flap Wheel



Polishing Shop



Welding Rod



Filler Wire



Packing



MUKESH STEEL



Deeparan M. Prajapat +91 9619519358 / +91 9867104478

STAINLESS STEEL PIPE DIMENSION - KG. PER MTR. (ANSI B36.19)

Nominal Bore		Outside Diameter	Schedule 5S		Schedule 10S		Schedule 40S		Schedule 80S		Schedule 160S		Schedule XXS	
mm	INCH	mm	Wt mm	Weight (Kg/m)	Wt mm	Weight (Kg/m)	Wt mm	Weight (Kg/m)	Wt mm	Weight (Kg/m)	Wt mm	Weight (Kg/m)	Wt mm	Weight (Kg/m)
3	1/8	10.3	1.24	0.276	1.24	0.28	1.73	0.37	2.41	0.47	-	-	-	-
6	1/4	13.7	1.24	0.390	1.65	0.49	2.24	0.631	3.02	0.80	-	-	-	-
10	3/8	17.1	1.24	0.490	1.65	0.63	2.31	0.845	3.20	1.10	-	-	-	-
15	1/2	21.3	1.65	0.800	2.11	1.00	2.77	1.27	3.75	1.62	4.75	1.94	7.47	2.55
20	3/4	26.7	1.65	1.03	2.11	1.28	2.87	1.68	3.91	2.20	5.54	2.89	7.82	3.63
25	1	33.4	1.65	1.30	2.77	2.09	3.38	2.50	4.55	3.24	6.35	4.24	9.09	5.45
32	1 1/4	42.2	1.65	1.65	2.77	2.70	3.56	3.38	4.85	4.47	6.35	5.61	9.70	7.77
40	1 1/2	48.3	1.65	1.91	2.77	3.11	3.68	4.05	5.08	5.41	7.14	7.25	10.16	9.54
50	2	60.3	1.65	2.40	2.77	3.93	3.91	5.44	5.54	7.48	8.74	11.1	11.07	13.44
65	2 1/2	73.0	2.11	3.69	3.05	5.26	5.16	8.63	7.01	11.4	9.53	14.9	14.2	20.39
80	3	88.9	2.11	4.51	3.05	6.45	5.49	11.30	7.62	15.2	11.1	21.3	15.24	27.65
100	4	114.3	2.11	5.84	3.05	8.36	6.02	16.07	8.56	22.3	13.49	33.54	17.12	41.03
125	5	141.3	2.77	9.47	3.40	11.57	6.55	21.8	9.53	31.97	15.88	49.11	19.05	57.43
150	6	168.3	2.77	11.32	3.40	13.84	7.11	28.3	10.97	42.7	18.2	67.56	21.95	79.22
200	8	219.1	2.77	14.79	3.76	19.96	8.18	42.6	12.07	64.6	23.0	111.2	22.23	107.8
250	10	273.1	3.40	22.63	4.19	27.78	9.27	60.5	15.08	96.0	28.6	172.4	25.40	155.15
300	12	323.9	3.96	31.25	4.57	36.00	9.52	73.88	17.45	132.0	33.32	238.76	25.40	186.97
350	14	355.6	3.96	34.36	4.78	41.3	11.13	94.59	19.05	158.08	35.71	281.70	-	-
400	16	406.4	4.19	41.56	4.78	47.29	12.7	123.30	21.41	203.33	40.46	365.11	-	-
450	18	457.2	4.19	46.80	4.78	53.42	14.27	155.80	23.8	254.36	45.71	466.40	-	-
500	20	508.0	4.78	59.25	5.54	68.71	15.09	183.42	26.19	311.2	49.99	564.68	-	-
600	24	609.6	5.54	82.47	6.35	94.45	17.48	255.41	30.96	442.08	59.54	808.22	-	-

CARBON STEEL SEAMLESS PIPE DIMENSION & WEIGHT - KG. PER MTR. (ANSI B 36.10)

Nominal Pipe size	O/D	Schedule 10		Schedule 20		Schedule 30		Schedule STD		Schedule 40		Schedule 60		Schedule Extra Strong (XS)		Schedule 80		Schedule 100		Schedule 120		Schedule 140		Schedule 160		Schedule Double Extra Strong (XXS)			
		mm	kg/m	mm	kg/m	mm	kg/m	wall	wt.	wall	wt.	wall	wt.	wall	wt.	wall	wt.	wall	wt.	wall	wt.	wall	wt.	wall	wt.	wall	wt.		
3	1/8	10.3						1.73	0.37	1.73	0.37			2.41	0.47	2.41	0.47												
6	1/4	13.7						2.24	0.63	2.24	0.63			3.02	0.80	3.02	0.80												
10	3/8	17.1						2.31	0.84	2.31	0.84			3.20	1.10	3.20	1.10												
15	1/2	21.3						2.77	1.27	2.77	1.27			3.73	1.62	3.73	1.62							4.78	1.95	7.5	2.55		
20	3/4	26.7						2.87	1.69	2.87	1.69			3.91	2.20	3.91	2.20							5.6	2.90	7.82	3.64		
25	1	33.4						3.38	2.50	3.38	2.50			4.55	3.24	4.55	3.24							6.35	4.24	9.1	5.45		
32	1 1/4	42.2						3.56	3.39	3.56	3.39			4.85	4.47	4.85	4.47							6.35	5.61	9.7	7.77		
40	1 1/2	48.3						3.68	4.05	3.68	4.05			5.08	5.41	5.08	5.41							7.14	7.25	10.2	9.56		
50	2	60.3						3.91	5.44	3.91	5.44			5.54	7.48	5.54	7.48							8.74	11.11	11.07	13.4		
65	2 1/2	73.0						5.16	8.63	5.16	8.63			7.01	11.41	7.01	11.41							9.53	14.92	14.0	20.4		
80	3	88.9						5.49	11.3	5.49	11.3			7.62	15.27	7.62	15.3							11.13	21.35	15.24	27.7		
90	3 1/2	101.6						5.74	13.57	5.74	13.57			8.08	18.63	8.08	18.63							-	-	-	34.1		
100	4	114.3						6.02	16.07	6.02	16.07			8.56	22.3	8.56	22.3			11.13	28.32			13.5	33.5	17.12	41.03		
125	5	141.3						6.55	21.77	6.55	21.77			9.53	30.9	9.53	30.9			12.7	40.2			15.9	49.11	19.0	57.4		
150	6	168.3						7.11	28.26	7.11	28.26			10.97	42.5	10.97	42.5					14.3	54.2			18.3	67.5	21.95	79.22
200	8	219.1		6.35	33.3	7.0	36.8	8.18	42.5	8.18	42.55	10.31	53.10	12.7	64.6	12.7	64.5	15.1	75.92	18.3	90.4	20.6	100.9	23.0	111.27	22.23	108.0		
250	10	273.0		6.35	41.7	7.8	51.3	9.27	60.3	9.27	60.31	12.70	81.50	12.7	81.5	15.1	96.0	18.3	114.7	21.44	133.0	25.4	155	28.6	172.3	25.4	155.0		
300	12	323.9		6.35	49.7	8.4	65.2	9.53	73.8	10.31	79.73	14.30	109.0	12.7	97.4	17.5	132.0	21.4	160.0	25.4	187.0	28.6	208	33.3	238.7	25.4	187.0		
350	14	355.6	6.35	54.6	7.92	67.9	9.53	81.3	95.3	81.3	111.3	94.55	15.10	126.4	12.7	107.4	19.0	158.0	23.8	195.0	27.8	224.0	31.8	253.5	35.7	281.7			
400	16	406.4	6.35	62.6	7.92	77.9	9.53	93.3	95.3	93.3	12.7	123.3	16.70	160.0	12.7	123.3	21.44	203.5	26.2	245.5	30.9	286.6	36.53	333	40.5	365.4			
450	18	457.0	6.35	70.5	7.92	87.7	11.13	122.4	95.3	105.0	14.27	156.0	19.05	206.0	12.7	139.0	23.8	254.6	29.36	309.6	34.9	363.6	39.7	408.3	45.2	459.4			
500	20	508.0	6.35	78.5	9.53	117.2	12.7	155.1	95.3	117.2	15.09	183.4	20.62	248.5	12.7	155.1	26.2	311.2	32.54	381.5	38.1	441.5	44.4	508	50.0	564.8			
550	22	559.0	6.35	86.5	9.53	129.0	12.7	171.0	95.3	129.0			22.20	294.0	12.7	171.0	28.6	373.8	34.9	451.4	41.3	527.0	47.6	600	54.0	672.0			
600	24	610.0	6.35	94.5	9.53	141.0	14.3	209.7	95.3	141.0	17.48	255.4	24.61	355.0	12.7	187.0	30.96	442.08	38.89	547.7	46.0	640.0	52.4	720.15	59.5	808.22			
650	26	660.0	7.92	127.0	12.7	203.0			95.3	153.0					12.7	202.7													
700	28	711.0	7.92	137.4	12.7	218.7	15.88	271.2	95.3	165.0					12.7	218.7													
750	30	762.0	7.92	147.3	12.7	234.6	15.88	292.18	95.3	176.8					12.7	234.7													
800	32	813.0	7.92	157.0	12.7	250.6	15.88	312.0	95.3	188.2	17.48	342.9			12.7	250.6													
850	34	864.0	7.92	167.0	12.7	266.6	15.88	332.1	95.3	200.3	17.48	364.9			12.7	266.6													
900	36	914.4	7.92	176.9	12.7	282.3	15.88	351.7	95.3	212.5	19.05	420.4			12.7	282.2													



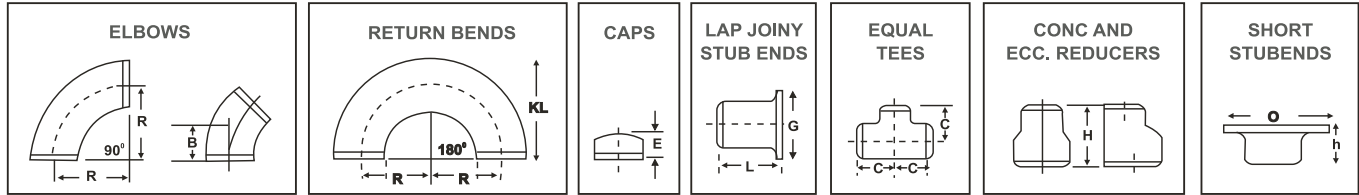
MUKESH STEEL



Deeparan M. Prajapat +91 9619519358 / +91 9867104478

BUTT WELDING FITTING TO ANSI B16.9

STAINLESS STEEL ASTM A403 / CARBON STEEL ASTM A234



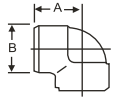
NOM BORE	PIPE O.D.	WALL THICKNESS				RADIUS				R	A	B	C	E	G	L		H	D	H
		5S	10S	40S	80S	1D	1.5D	2D	3D							SHORT	LONG			
1/2	21.34	1.65	2.11	2.77	3.73	12.7	19.05	25.4	38.1	12.7	15.9	25.4	25.4	34.9	50.8	76.2	50.8	42	8	
3/4	26.67	1.65	2.11	2.87	3.91	19.05	28.57	38.10	57.15	19.05	11.1	28.6	25.4	42.8	50.8	76.2	50.8	52	8	
1	33.40	1.65	2.77	3.38	4.55	25.4	38.1	50.8	76.2	25.4	22.2	38.1	38.1	50.8	50.8	101.6	50.8	62	10	
1 1/4	42.16	1.65	2.77	3.56	4.85	31.75	47.6	63.5	95.25	31.75	25.0	47.6	38.1	63.5	50.8	101.6	50.8	72	12	
1 1/2	48.26	1.65	2.77	3.68	5.08	38.1	57.15	76.2	114.3	38.10	28.6	57.2	38.1	73.0	50.8	101.6	63.5	82	12	
2	60.32	1.65	2.77	3.91	5.54	50.8	76.2	101.6	152.4	50.8	34.0	63.5	38.1	92.0	63.5	152.4	76.2	98	16	
2 1/2	73.02	2.11	3.05	5.16	7.01	63.5	95.25	127.0	190.5	63.5	44.0	76.2	38.1	104.8	63.5	152.4	88.9	118	16	
3	88.90	2.11	3.05	5.49	7.62	76.2	114.30	152.4	228.6	76.2	50.8	86.7	50.8	127.0	63.5	152.4	88.9	130	18	
3 1/2	101.60	2.11	3.05	5.74	8.08	88.9	133.35	177.8	266.7	88.9	57.2	95.3	63.5	139.7	76.2	152.4	101.6	140	18	
4	114.30	2.11	3.05	6.02	8.56	101.6	152.4	203.2	304.8	101.6	63.5	104.8	63.5	157.2	76.2	152.4	101.6	168	20	
5	141.30	2.77	3.40	6.55	9.52	127.0	190.5	254.0	381.0	127.0	82.6	123.8	76.2	185.7	76.2	203.2	127.0	188	25	
6	168.27	2.77	3.40	7.11	10.97	152.4	226.6	304.8	457.2	152.4	95.3	142.7	88.9	215.9	88.9	203.2	139.7	215	25	
8	219.07	2.77	3.76	8.18	12.7	203.2	304.8	406.4	609.6	203.2	127.0	177.5	101.6	270.0	101.6	203.2	152.4	270	30	
10	273.05	3.40	4.19	9.27	12.7	254.0	381.0	508.0	762.0	254.0	158.7	215.9	127.0	324.0	127.0	254.0	177.8	330	35	
12	323.85	3.96	4.57	9.52	12.7	304.8	457.2	609.6	914.4	304.8	190.5	254.0	152.4	381.0	152.4	254.0	203.2	400	40	
14	355.60	3.96	4.76	9.52	12.7	355.6	533.4	711.2	1066	355.6	222.2	280.0	165.1	412.8	152.4	305.0	330.2	-	-	
16	406.40	4.19	4.76	9.52	12.7	406.4	609.6	812.8	1219	406.4	254.0	304.8	177.8	470.0	152.4	305.0	355.6	-	-	
18	457.20	4.19	4.76	9.52	12.7	457.2	685.8	914.4	1372	457.2	285.7	343.0	203.2	533.4	152.4	305.0	381.0	-	-	
20	508.00	4.76	5.54	9.52	12.7	508.0	762.0	1016	1524	508.0	317.6	381.0	228.6	584.2	152.4	305.0	508.0	-	-	
24	609.60	5.54	6.35	9.52	12.7	609.6	914.4	1219	1829	-	381.0	431.8	266.7	698.5	152.4	305.0	508.0	-	-	

STANDARDS : All dimensions are in mm and confirm to ANSI B 16.9 and MSS. SP-43

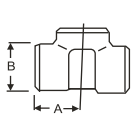


DIMENSION IN MM OF FORGED SCREWED & SOCKET WELD

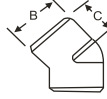
90° ELBOWS



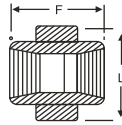
TEE



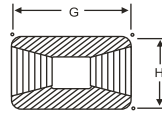
45° ELBOW



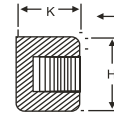
UNION



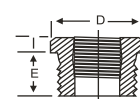
COUPLING



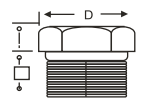
PIPE CAP



BUSHING



HEX HEAD PLUG

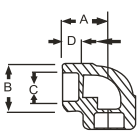


HALF COUPLING = G/2

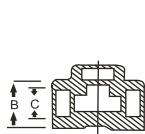
DIMENSION IN MM OF FORGED SCREWED FITTINGS TO ANSI B-16.11 THREADED TO ASA B 2.1

NOM BORE	PIPE O.D.	3000 L.B.S.						COMMON FACTORS						6000 L.B.S					
		A	B	C	G	H	K	D	E	F	I	J	L	A	B	C	G	H	K
1/8"	10.3	21	22	17	32	16	19	11	10	40	-	6	-	25	25	19	32	22	-
1/4"	13.7	25	25	19	35	19	25	16	11	43	3	6	32	29	33	22	35	25	27
3/8"	17.2	29	33	22	38	22	25	17.5	13	48	4	8	38	33	38	25	38	32	27
1/2"	21.3	33	38	25	48	29	32	22	15	51	5	8	46	38	46	29	48	38	33
3/4"	26.7	38	46	29	51	35	37	27	16	57	6	10	51	44	56	33	51	44	38
1"	33.4	44	56	33	60	44	41	35	19	64	6	10	60	51	62	35	60	57	43
1 1/4"	42.2	51	62	35	67	57	44	44.5	21	70	7	14	72	60	75	43	67	64	46
1 1/2"	48.3	60	75	43	79	64	44	51	21	79	8	16	80	64	84	44	79	76	48
2"	60.3	64	84	45	86	76	48	63.5	22	88	9	17	94	83	102	52	86	92	51
2 1/2"	73.02	83	102	52	92	92	60	76	27	118	10	21	122	95	121	64	92	108	64
3"	89.0	95	121	64	108	108	65	89	29	121	10	25	140	106	146	79	108	127	68
4"	114.5	114	152	79	121	140	68	117.5	32	150	13	25	180	114	152	79	121	159	75

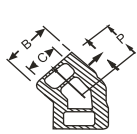
90° ELBOWS



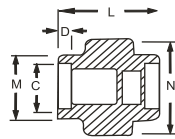
TEE



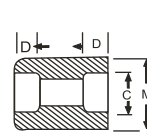
45° ELBOW



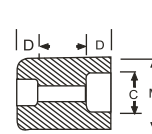
UNION



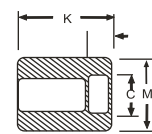
COUPLING



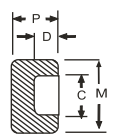
REDUCER



HALF COUPLING



CAP



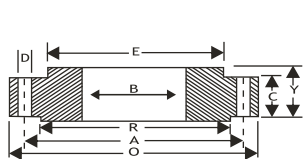
SOCKET WELD FITTING TO ANSI B-16.11

NOM BORE	PIPE O.D.	3000 L.B.S.						COMMON FACTORS						6000 L.B.S					
		A	B	K	J	L	M	N	P	Q	C	D	O	O	A	B	M	K	N
1/8"	10.3	22	18.5	26	16	40	17.3	32	17.5	10	10.7	10	5	8	22	22	20	25	46
1/4"	13.7	22	22	26	18	43	21.2	32	17.5	10	14.1	10	5	8	27	25	24	25	51
3/8"	17.2	25	25	26	19	48	25.4	36	19	10	17.6	10	3	9	27	28	28	26	60
1/2"	21.3	27	32	30	21	51	31	43	22	10	21.7	10	6	13	31	34	34	31	72
3/4"	26.7	34	38	36	24	57	37	50	25	13	27	13	6	13	37	42	41	35	80
1"	33.4	37	46	40	25	64	45.2	60	27	13	33.8	13	9	17	42	50	50	40	94
1 1/4"	42.2	42	56	40	29	70	55	70	30	13	42.6	13	9	17	47	59	58	41	100
1 1/2"	48.3	47	62	40	30	79	61.4	78	32	13	48.7	13	9	17	53	67	66	43	122
2"	60.3	56	75	52	37	89	75	95	38	13	61.2	16	15	23	59	84	83	55	
2 1/2"	73.02	60	92	52	48	114	91.3	125	38	16	73.8	16	14	24		102		56	
3"	89.00	76	110	52	51	127	108.8	140	44	16	89.8	16	14	24		121		58	
4"	114.50	88	137	58		150	136.9		48	19	115.5	19	14	24		152		64	

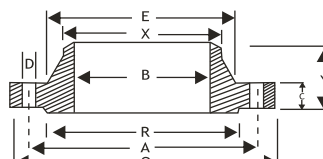
DIMENSIONS AND OTHERS SPECIFICATIONS AS PER CUSTOMERS REQUIREMENTS ARE AVAILABLE ON REQUEST



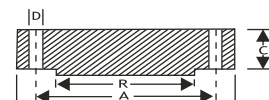
FLANGES CLASS 600 & 900



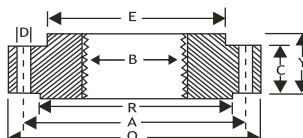
SLIP-ON FLANGE



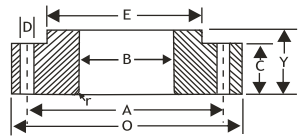
WELDING NECK FLANGE



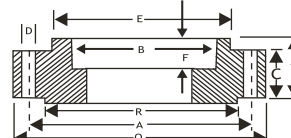
BLIND FLANGE



THREADED FLANGE



LAP JOINT FLANGE



SOCKET WELD FLANGE

DIMENSIONS OF CLASS 600 FLANGES AS PER B 16.5

Nominal Pipe Size	Flange Dia O	Dia of Bolt Circle A	No. of Bolt Holes D	No. of Holes	Thk of Flange C	Dia of Hub E	Length through Hub			Dia Bore		Dia of R/F R	Depth of Socket F	Pipe Dia X
							S/O & S/W Y	W/N Y	L/J Y	S/O & S/W B	L/J B			
15	95.2	66.7	15.9	4	14.3	38.1	22.2	52.4	22.3	22.3	22.8	34.9	9.5	21.33
20	117.5	82.5	19.0	4	15.9	47.6	25.4	57.1	25.4	27.7	28.1	42.9	11.1	26.67
25	123.8	88.9	19.0	4	17.5	54.0	27.0	61.9	26.9	34.5	35.0	50.8	12.7	33.40
32	133.3	98.4	19.0	4	20.6	63.5	28.6	66.7	28.4	43.2	43.6	63.5	14.2	42.16
40	155.6	114.3	22.2	4	22.2	69.8	31.7	69.8	31.7	49.5	50.0	73.0	15.8	48.26
50	165.1	127.0	19.0	8	25.4	84.1	36.5	73.0	36.5	62.0	62.4	92.1	17.4	60.31
65	190.5	149.2	22.2	8	28.6	100.0	41.3	79.4	41.1	74.7	75.4	104.8	19.0	73.02
80	209.5	168.3	22.2	8	31.8	117.5	46.0	82.5	45.9	90.7	91.4	127.0	-	88.90
100	273.0	215.9	25.4	8	38.1	152.4	54.0	101.6	53.8	116.1	116.8	157.2	-	114.30
125	330.2	266.7	28.6	8	44.4	188.9	60.3	114.3	60.4	143.8	141.5	185.7	-	141.30
150	355.6	292.1	28.6	12	47.6	222.2	66.7	117.5	66.5	170.7	171.4	215.9	-	168.27
200	419.1	349.2	31.7	12	55.6	273.0	76.2	133.3	76.2	221.5	222.2	269.9	-	219.07
250	508.0	431.8	34.9	16	63.5	342.9	85.7	152.4	111.2	276.3	277.3	323.8	-	273.05
300	558.8	488.9	34.9	20	66.7	400.0	92.1	155.6	117.3	327.1	328.1	381.0	-	323.85
350	603.2	527.0	38.1	20	69.9	431.8	93.7	165.1	127.0	359.1	360.1	412.7	-	355.60
400	685.8	603.2	41.3	20	76.2	495.3	106.4	177.8	139.7	410.5	411.2	469.9	-	406.40
450	742.9	654.0	44.4	20	82.6	546.1	117.5	184.1	152.4	461.8	462.2	533.4	-	457.20
500	812.8	723.9	44.4	24	88.9	609.6	127.0	190.5	165.1	513.1	514.3	584.2	-	508.00
600	939.8	838.2	50.8	24	101.6	717.5	139.7	203.2	184.1	615.9	615.9	692.1	-	609.60

DIMENSIONS OF CLASS 900 FLANGES AS PER B 16.5

Nominal Pipe Size	Flange Dia O	Dia of Bolt Circle A	Dia of Bolt Holes D	No. of Holes	Thk of Flange C	Dia of Hub E	Length through Hub			Dia Bore		Dia of R/F R	Depth of Socket F	Pipe Dia X
							S/O & S/W Y	W/N Y	L/J Y	S/O & S/W B	L/J B			
15	120.6	82.5	22.2	4	22.2	38.1	31.7	60.3	31.7	22.3	22.8	34.9	9.5	21.33
20	130.2	88.9	22.2	4	25.4	44.4	34.9	69.8	35.0	27.7	28.1	42.9	11.1	26.67
25	149.2	101.6	25.4	4	28.6	52.4	41.3	73.0	41.1	34.5	35.0	50.8	12.7	33.40
32	158.7	111.1	25.4	4	28.6	63.5	41.3	73.0	41.1	43.2	43.6	63.5	14.2	42.16
40	177.8	123.8	28.6	4	31.8	69.8	44.4	82.5	44.4	49.5	50.0	73.0	15.8	48.26
50	215.9	165.1	25.4	8	38.1	104.8	57.1	101.6	57.1	62.0	62.4	92.1	17.4	60.31
65	244.5	190.5	28.6	8	41.3	123.8	63.5	104.8	63.5	74.7	75.4	104.8	19.0	73.02
80	241.3	190.5	25.4	8	38.1	127.0	53.9	101.6	53.8	90.7	91.4	127.0	-	88.90
100	292.1	234.9	31.7	8	44.4	158.7	69.8	114.3	69.8	116.0	116.8	157.1	-	114.30
125	349.2	279.4	35.0	8	50.8	190.5	79.3	127.0	79.2	143.7	141.5	185.7	-	141.30
150	381.0	317.5	31.7	12	55.6	234.9	85.8	139.7	85.8	170.6	171.4	215.9	-	168.27
200	469.9	393.7	38.1	12	63.5	298.4	101.6	162.0	114.3	221.4	222.2	269.8	-	219.07
250	546.1	469.9	38.1	16	69.8	368.3	107.9	184.1	127.0	276.3	277.3	323.8	-	273.05
300	609.6	533.4	38.1	20	79.3	419.1	117.4	200.0	142.7	327.1	328.1	381.0	-	323.85

Metric values are direct conversion from Inches table of B16.5
RF Thickness 6.3 mm Extra to be provided (Except Lap Joint Flange & FF Flanges).



MUKESH STEEL

Deeparan M. Prajapat +91 9619519358 / +91 9867104478



Power House



Steel Plant



Offshore Platform



Chemical Industries



Petrochemical Industries

FORMULA OF CALCULATING WEIGHT

- 1) **WEIGHT OF S. S. PIPE**
 $O.D. (mm) - W. Thick (mm) \times W. Thick (mm) \times 0.0248 = Wt. Per Mtr.$
 $O.D. (mm) - W. Thick (mm) \times W. Thick (mm) \times 0.00756 = Wt. Per Feet$
- 2) **WEIGHT OF S. S. ROUND BAR**
 $DIA (mm) \times DIA (mm) \times 0.00623 = Wt. Per Mtr.$
 $DIA (mm) \times DIA (mm) \times 0.0019 = Wt. Per Feet$
- 3) **WEIGHT OF S. S. SQUARE BAR**
 $DIA (mm) \times DIA (mm) \times 0.00788 = Wt. Per Mtr.$
 $DIA (mm) \times DIA (mm) \times 0.0024 = Wt. Per Feet$
- 4) **WEIGHT OF S. S. HEXAGONAL BAR**
 $DIA (mm) \times DIA (mm) \times 0.00680 = Wt. Per Mtr.$
 $DIA (mm) \times DIA (mm) \times 0.002072 = Wt. Per Feet$
- 5) **WEIGHT OF S. S. FLAT BAR**
 $Width (mm) \times Thick (mm) \times 0.00798 = Wt. Per Mtr.$
 $Width (mm) \times Thick (mm) \times 0.00243 = Wt. Per Feet$
- 6) **WEIGHT OF S. S. SHEETS & PLATES**
 $Length (Mtrs) \times Width (Mtrs) \times Thick (mm) \times 8 = Wt. Per PC$
 $Length (Fit) \times Width (Fit) \times Thick (mm) \times 3/4 = Wt. Per PC$
- 7) **WEIGHT OF S. S. CIRCLE**
 $DIA (mm) \times DIA (mm) \times Thick (mm) \div 160 = Gms. PC$
 $DIA (mm) \times DIA (mm) \times Thick (mm) \times 0.0000063 = Kg. Per PC$
- 8) **WEIGHT OF BRASS PIPE / COPPER PIPE**
 $O.D. (mm) - Thick (mm) \times 0.0260 = Wt. Per Mtr.$
- 9) **WEIGHT OF LEAD PIPE**
 $O. D. (mm) - Wt. (mm) \times Wt. (mm) \times 0.0345 = Wt. Per Mtr.$
- 10) **WEIGHT OF ALUMINIUM PIPE**
 $O. D. (mm) - Thick (mm) \times Thick (mm) \times 0.0083 = Wt. Per Mtr.$
- 11) **WEIGHT OF ALUMINIUM SHEET**
 $Length (Mtr.) \times Width (Mtr.) \times Thick (mm) \times 2.69 = Wt. Per PC$
- 12) **WEIGHT OF CONVERSION OF MTR. TO FEET**
 $Wt. of Mtr. \div 3.2808 = Wt. Per Feet.$



Flange CNC Machine



Fertilizer Plants



Refinery Petrochemical Plant



Port Trusts



Navy Submarine

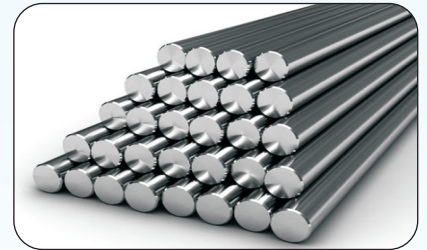
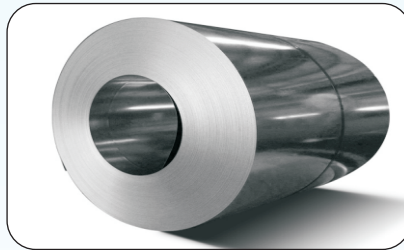
BRANDS We Deal in





APPLICATION INDUSTRIES

- Oil & Gas Industries
- Steel Plant & Rolling Mills Mfg.
- Automobile & Heavy Mobile Vehicle
- Material Handling Stores
- Agriculture Machinery Equipments
- Refineries
- Analyzer-lab & Testing Equipments
- Paint Industries
- Car Care Systems
- Life Sciences
- Super Market Storage & Rack System
- Automation Machinery
- Multi Parking Systems
- Military
- Power Generations Systems
- Cement Industry Machinery
- Motion & Control Tech. Equipment
- Hydrostatic Drive Systems
- Hydrostatic Press & Power Packs
- Cooling & Heating Systems
- Packaging Equipments
- Engines & Railways
- Pulp Paper Machinery
- Fuel Cells Components
- Machine Tool Application
- Industrial Mining Equipments
- Food & Beverage Equipments
- Marine Project
- Oil Mill Plants
- Aerospace & Aircraft System
- Pollution Control Equipments
- Offshore Engineering
- Plastic / Rubber Processing Machines
- Chemical Machinery
- Fire & Safety Industries



Deeparam M. Prajapat
 +91 9619519358
 +91 9867104478



Ashok D. Prajapat
 +91 7304867104

MUKESH STEEL

39, Satwari Building, Shop No. 1, Opp. Durgadevi Garden, 3rd Kumbharwada, Mumbai - 400 004.
 Tel.: +91-22 6636 3205 / +91-22 6639 4637 • E-mail : mukeshsteel177@gmail.com